

**JULIAN SCHNABEL: WORKS ON PAPER**

Feb 3 - March 3, 2007

1



**Julian Schnabel**

*Laem Khao to Ko Kra*, 2006

Mixed media on map

56 1/2 x 39 in. framed

(JS-61)

2



**Julian Schnabel**

*De San Quintin to Isla Cedros*, 2006

Mixed media on map

56 1/2 x 39 in. framed

(JS-62)

3



**Julian Schnabel**

*Bermuda Islands Great Sound*, 2006

Mixed media on map

55 x 39 in. framed

(JS-63)

4



**Julian Schnabel**

*Golfo de Morrosquillo and Approaches*, 2006

Mixed media on map

57 x 38 in. framed

(JS-64)

5



**Julian Schnabel**

*Boca de Uchire to Morro de Chacopata, 2006*

Mixed media on map  
47 x 35 1/2 in. framed

(JS-65)

6



**Julian Schnabel**

*Cabo Tiburon to Isla Fuerte, 2006*

Mixed media on map  
50 x 35 1/2 in.

(JS-66)

7



**Julian Schnabel**

*Crooked Island to Cabo Maisi, 2006*

Mixed media on map  
52 x 36 in. framed

(JS-67)

8



**Julian Schnabel**

*San Nicolas Island, 2006*

Mixed media on map  
45 1/2 x 36 in. framed

(JS-68)

9



**Julian Schnabel**

*Solomon Islands, 2006*

Mixed media on map  
55 x 35 1/2 in. framed

(JS-69)

10



**Julian Schnabel**

*Point Dume to Purisima Point, 2006*

Mixed media on map

50 1/2 x 36 in. framed

(JS-70)

11



**Julian Schnabel**

*Coral and Solomon Seas, 2006*

Mixed media on map

48 x 34 in. framed

(JS-71)

12



**Julian Schnabel**

*San Pedro Channel, 2006*

Mixed media on map

51 x 37 in. framed

(JS-72)

13



**Julian Schnabel**

*Guadeloupe, 2006*

Mixed media on map

40 x 35 in. framed

(JS-73)

14



**Julian Schnabel**

*Gazelle Peninsula and St. George's Channel,*

2006

Mixed media on map

48 x 33 in. framed

(JS-74)

15



**Julian Schnabel**  
*Russell Islands*, 2006  
Mixed media on map  
40 x 35 in. framed  
(JS-75)

16



**Julian Schnabel**  
*San Pedro Channel*, 2006  
Mixed media on map  
49 x 38 inches  
124.5 x 96.5 cm  
(JS-76)

17



**Julian Schnabel**  
*Eastern Part of Java Sea including Makassar Strait*, 2006  
Mixed media on map  
45 x 32 in. framed  
(JS-77)

18



**Julian Schnabel**  
*Gotland to Saaremaa*, 2006  
Mixed media on map  
49 x 32 in. framed  
(JS-78)

19



**Julian Schnabel**  
*Punta Abreojos to Cabo San Lazaro*, 2006  
Mixed media on map  
48 x 37 1/2 in. framed  
(JS-79)

20



**Julian Schnabel**

*Huntington Beach to Punta Sal Si Puedas, 2006*

Mixed media on map  
43 1/2 x 35 in. framed  
(JS-80)

21



**Julian Schnabel**

*West Coast of Costa Rica, 2006*

Mixed media on map  
38 1/2 x 33 in. framed  
(JS-81)

22



**Julian Schnabel**

*Edna Bay, 2006*

Mixed media on map  
61 x 50 1/2 in.  
(JS-82)

23



**Julian Schnabel**

*Magdalena Bay to La Paz, 2006*

Mixed media on map  
71 x 54 1/2 in.  
(JS-83)

24



**Julian Schnabel**

*Santa Barbara Island, 2006*

Mixed media on map  
52 x 55 3/4 in.  
(JS-84)

25

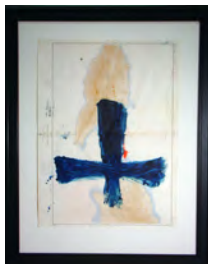


**Julian Schnabel**

*Great Keppel Island to Sandy Cape, 2006*

Mixed media on map  
55 1/2 x 42 1/4 in.  
(JS-85)

26



**Julian Schnabel**  
*Santa Cruz Channel, 2006*  
Mixed media on map  
61.5 x 49 inches  
156.2 x 124.5 cm

(JS-86)

27



**Julian Schnabel**  
*Southern Entrances to Summer Strait, 2006*  
Mixed media on map  
65 x 52 inches  
(JS-87)

28



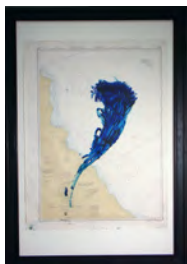
**Julian Schnabel**  
*Salina Cruz, 2006*  
Mixed media on map  
52.6 x 48.5 inches  
133.6 x 123.2 cm  
(JS-88)

29



**Julian Schnabel**  
*Cheduba Strait to Andrew Bay, 2006*  
Mixed media on map  
59 1/2 x 42 1/4 in.  
(JS-89)

30



**Julian Schnabel**  
*Point Conception to Point Sur, 2006*  
Mixed media on map  
66 1/2 x 46 1/2 in.  
(JS-90)

31



**Julian Schnabel**

*Point Bundaberg and Burnett River, 2006*

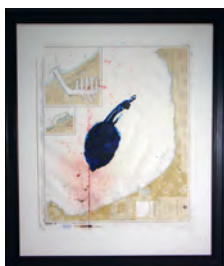
Mixed media on map

63 1/4 x 41 inches

160.7 x 104.1 cm

(JS-91)

32



**Julian Schnabel**

*Santa Monica Bay, 2006*

Mixed media on map

61 x 52 1/2 in.

(JS-92)

33



**Julian Schnabel**

*Golfe d'Arzew, 2006*

Mixed media on map

63 x 42 1/2 in.

(JS-93)

34



**Julian Schnabel**

*Grenada, 2006*

Mixed media on map

57 1/4 x 48 in.

(JS-94)

35



**Julian Schnabel**

*Vivario, Becerro, and Caratasca Cays, 2006*

Mixed media on map

50 1/2 x 43 in.

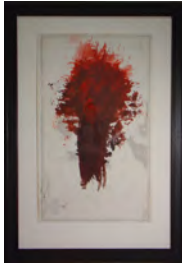
(JS-95)

36



**Julian Schnabel**  
*Santa Barbara Island*, 2006  
Mixed media on map  
61 1/4 x 50 1/2 in.  
(JS-96)

37



**Julian Schnabel**  
*Osumi Gunto and Approaches*, 2006  
Mixed media on map  
63 1/2 x 44 1/2 in.  
(JS-97)